

# TUBERCULOSIS RESOURCES

## LATENT TUBERCULOSIS INFECTION RESOURCES (LTBI)

Centers for Disease Control and Prevention (CDC) has compiled linked resources to assist:

<https://www.cdc.gov/tb/publications/lbti/lbtiresources.htm>

- |            |  |
|------------|--|
| Providers: | Testing<br>Treating<br>Fact sheets<br>Frequently Asked Questions |
| Patients:  | Testing<br>Treatment regimens<br>Tracking medication regimen     |

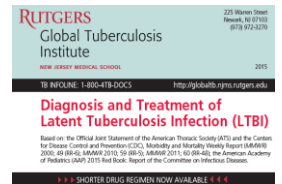


Global Tuberculosis Institute, Rutgers NJMS, created:

- 1) Laminated pocket card for clinicians on diagnosis and treatment for LTBI:

<http://globaltb.njms.rutgers.edu/educationalmaterials/productfolder/lbtidrugcard.php>

- Includes:
- |                             |                                      |
|-----------------------------|--------------------------------------|
| -who to test                | -who to treat                        |
| -IGRA or TST considerations | -LTBI regimens/considerations        |
| -monitoring of patients     | -managing patients on LTBI treatment |



- 2) Video series (3) on LTBI screening, diagnosis, and treatment

<http://globaltb.njms.rutgers.edu/educationalmaterials/productfolder/lbtimulti.php>

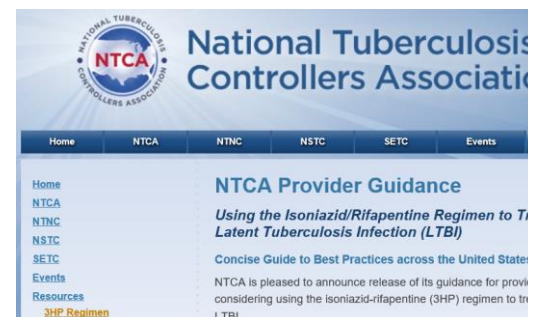
National Tuberculosis Controllers Association (NTCA) has created

*Provider Guidance for Using the Isoniazid/Rifapentine (3HP) Regimen*

<http://www.tbcontrollers.org/resources/3hp/#.XBgkWLmWx9A>

(Note: must download this document directly from NTCA site)

- 2 sided illustrated, document with valuable information tables
- reviews what, when, when *not* in 3HP use
- drug-drug interactions
- adverse reactions & monitoring



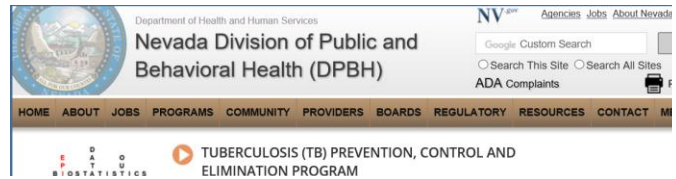
The Online TST/IGRA Interpreter: [tstin3d.com](http://tstin3d.com)

Tool to estimate likelihood true test results, annual risk of developing active TB disease, and cumulative risk of active TB disease by age 80:

<http://www.tstin3d.com/>



Nevada DPBH TB Program website:



[http://dpbh.nv.gov/Programs/TB/Tuberculosis \(TB\) Prevention, Control and Elimination Program -Home/](http://dpbh.nv.gov/Programs/TB/Tuberculosis (TB) Prevention, Control and Elimination Program -Home/)

- How to reach us
- Statutes/laws/regulations
- Reporting forms (Forms)
- Provider outreach information
- Publications (Fast facts, Technical Bulletins, Nevada TB Manual)
- Healthcare Facility TB Screening Manual (Publications)

[ECHO webinar](#) (control+click on ECHO) **Interpreting QuantiFERON and TB Resources, Jan 17, 2019**

Web address: <https://www.youtube.com/watch?v=U5TpY-hNQik&feature=youtu.be>

## TESTS FOR TB AND LTBI

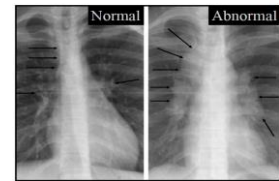
**IGRA blood test, Qiagen website- QuantiFERON Gold Plus (QFT):** questions and answers about results

<https://www.quantiferon.com/us/products/quantiferon-tb-gold-plus-us/provider-resources/provider-faq/>



**Radiographs and TB, Curry International TB Center of Excellence webpage:**

<http://www.currytbcenter.ucsf.edu/topics-interest/tb-radiology>



**Overview TB testing guidelines** (Jan 2017) per American Thoracic Society, Infect America, and CDC:

<https://www.cdc.gov/tb/publications/guidelines/pdf/ciw778.pdf>

## OTHER RESOURCES

**CDC Comprehensive TB Materials:**

- **Core Curriculum on Tuberculosis: What the Clinician Should Know**, from the CDC Division of TB Elimination ([www.cdc.gov/tb/education/corecurr/index.htm](http://www.cdc.gov/tb/education/corecurr/index.htm))
- **Interactive Core Curriculum on Tuberculosis**, from the CDC Division of TB Elimination ([www.cdc.gov/tb/webcourses/Course/main\\_menu/index.html](http://www.cdc.gov/tb/webcourses/Course/main_menu/index.html))
- **Self-Study Modules on TB, 1-5**, from the CDC Division of TB Elimination ([www.cdc.gov/tb/education/ssmodules/default.htm](http://www.cdc.gov/tb/education/ssmodules/default.htm))
- **TB 101 for Health Care Workers**, from the CDC Division of TB Elimination ([www.cdc.gov/tb/webcourses/TB101/default.htm](http://www.cdc.gov/tb/webcourses/TB101/default.htm))

**Curry International TB Center of Excellence:** <http://www.currytbcenter.ucsf.edu/consultation>

- 1) Training and educational resources: webinars, online courses, videos, manuals and templates
- 2) Consultation Services = Warmline: phone-in or email questions pertaining to LTBI and TB treatment, infection control, etc., to private or public providers, free of charge.

This publication was supported by the Nevada Division of Public and Behavioral Health and through Centers for Disease Control and Prevention Grant Number NU52PS004681. Its contents are solely the responsibility of the Author(s) and do not necessarily represent the official views of the Division nor the Centers for Disease Control and Prevention.